

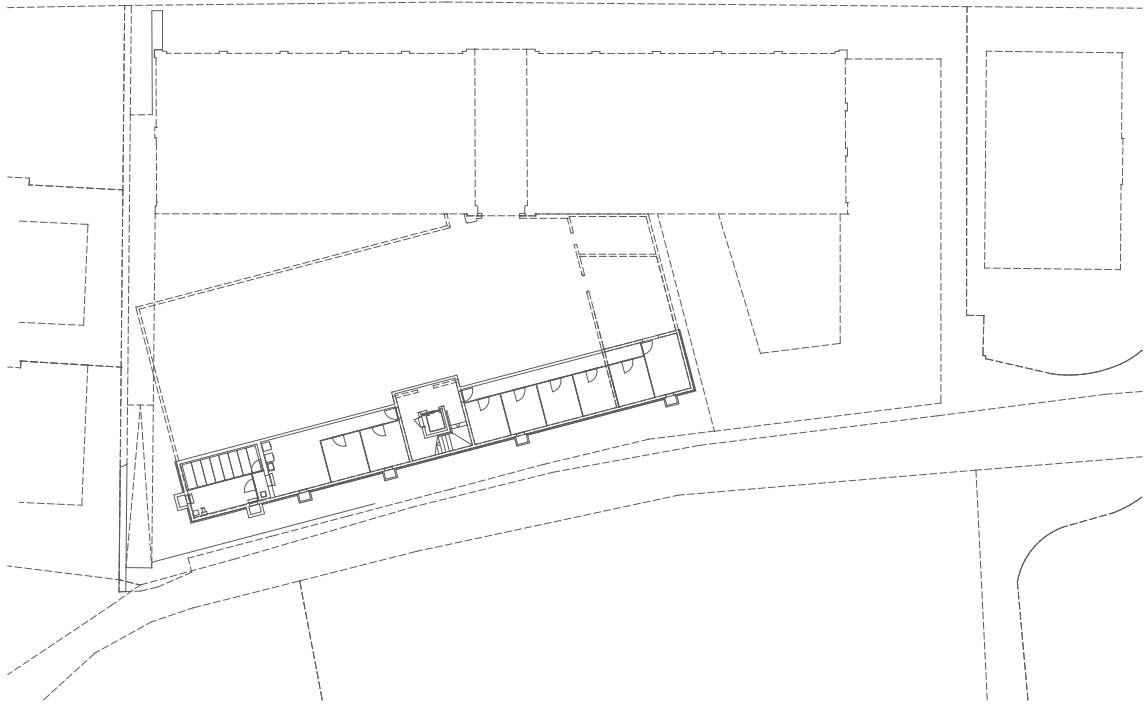
**Geninasca Delefortrie SA**  
Architectes FAS SIA  
Place-d'Armes 3  
CH-2001 Neuchâtel  
tél: 032 729 99 60  
fax: 032 729 99 69  
url: [www.gd-archi.ch](http://www.gd-archi.ch)  
email: [gd@gd-archi.ch](mailto:gd@gd-archi.ch)

Fondés de pouvoir  
Jean-Michel Deicher  
Philippe von Bergen

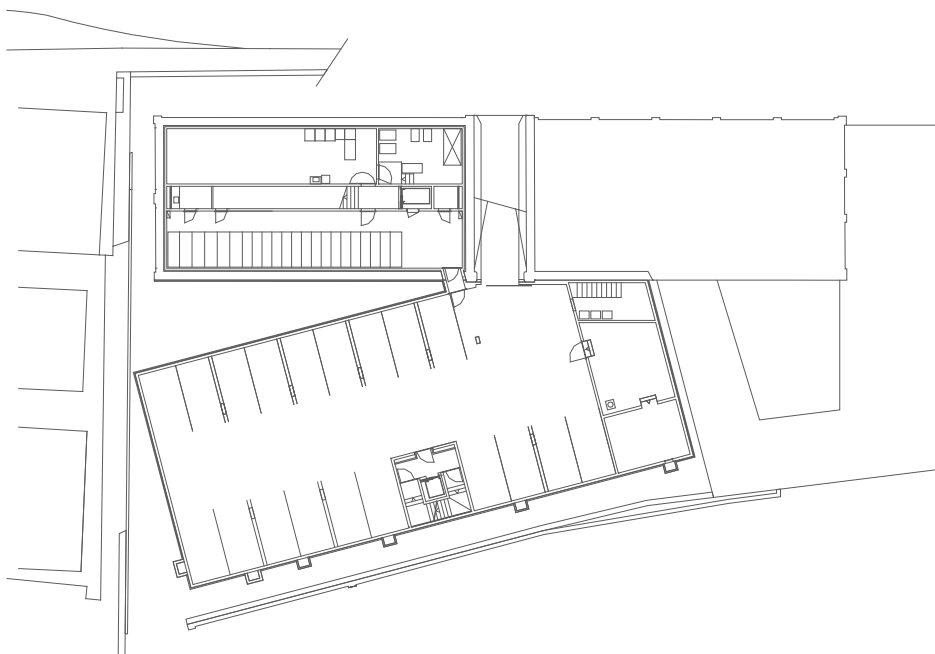


Logements - INAP - crèche, Neuchâtel

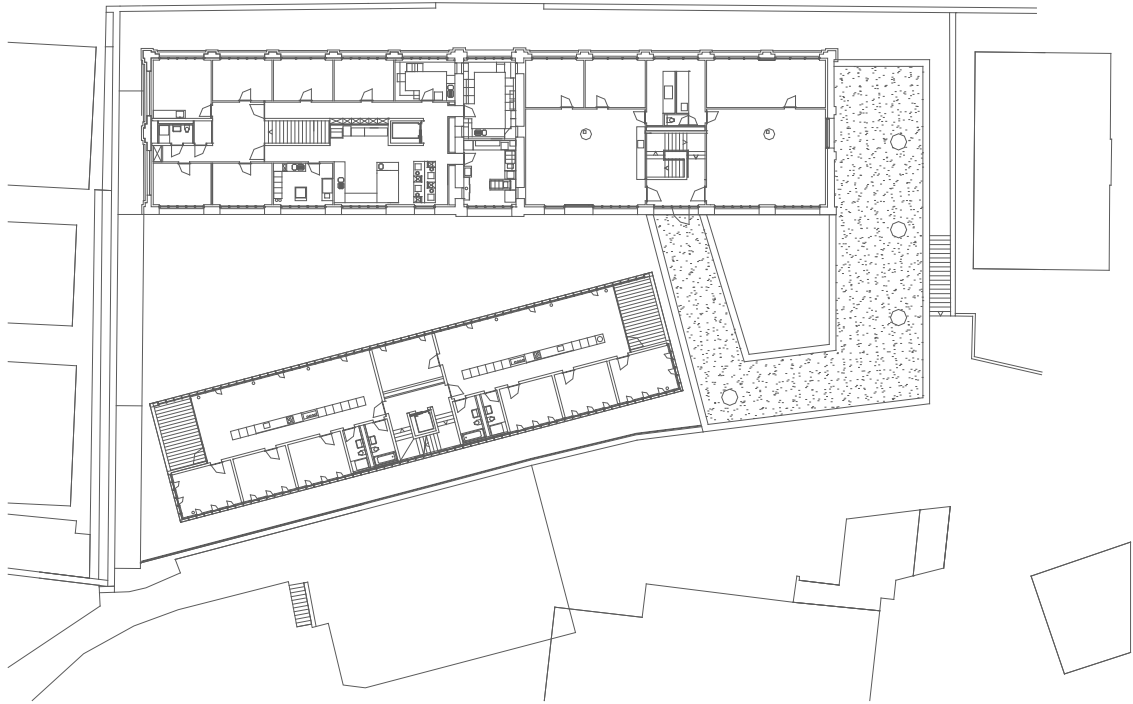




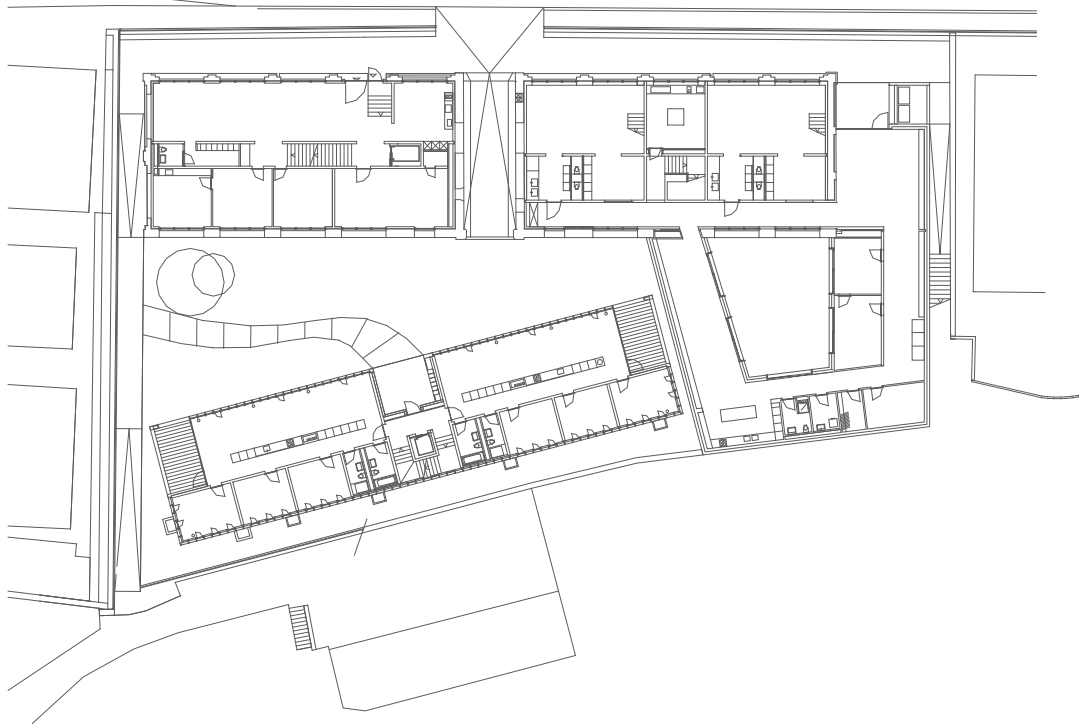
sous-sol caves/abri pc



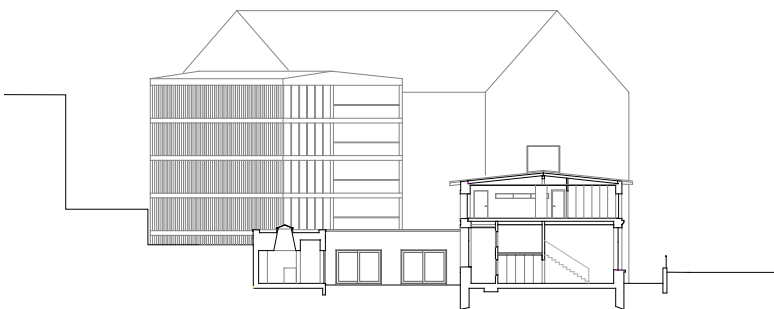
sous-sol parking



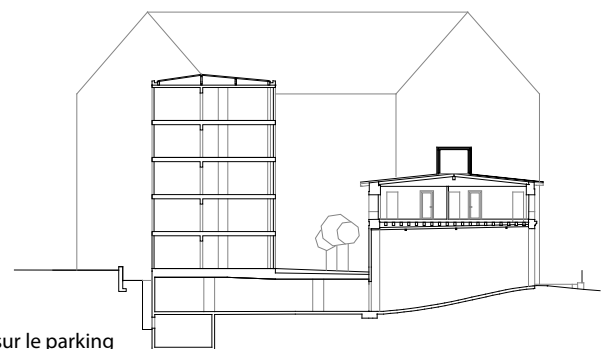
rez-de-chaussée



étages 1 à 4



coupe sur la crèche



coupe sur le parking