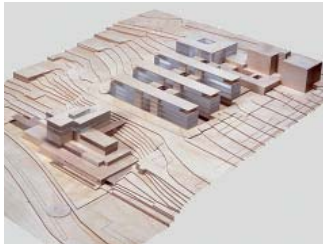
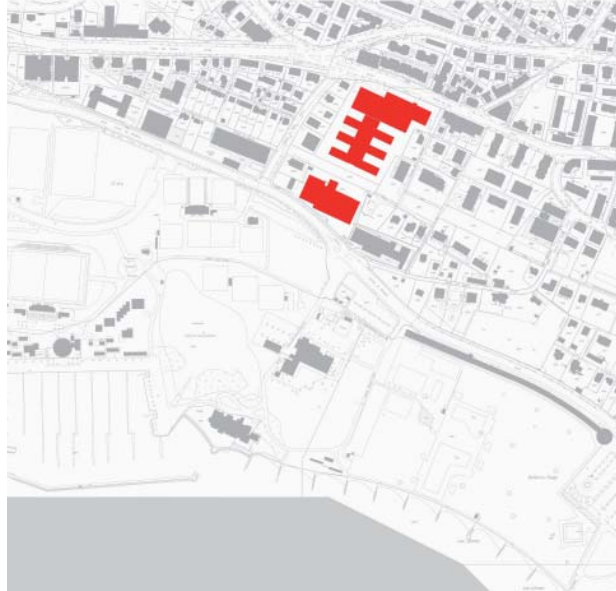


2002-2007 PMI Headquarters



Avenues de Cour et Rhodanie, Lausanne, VD
Appel d'offre restreint, projet lauréat, 2002.
Collaborateurs: Kim Henny, Sacha Karati, Soazig Lemarchand, Philippe et Claudia Neher-Valent, Stéphane Jordan, Clemens Blum



Plan de situation



dl-a, Devanthery & Lamunière Architectes
Rue du Tunnel 7
CH-1227 Genève/Carouge
www.dl-a.ch