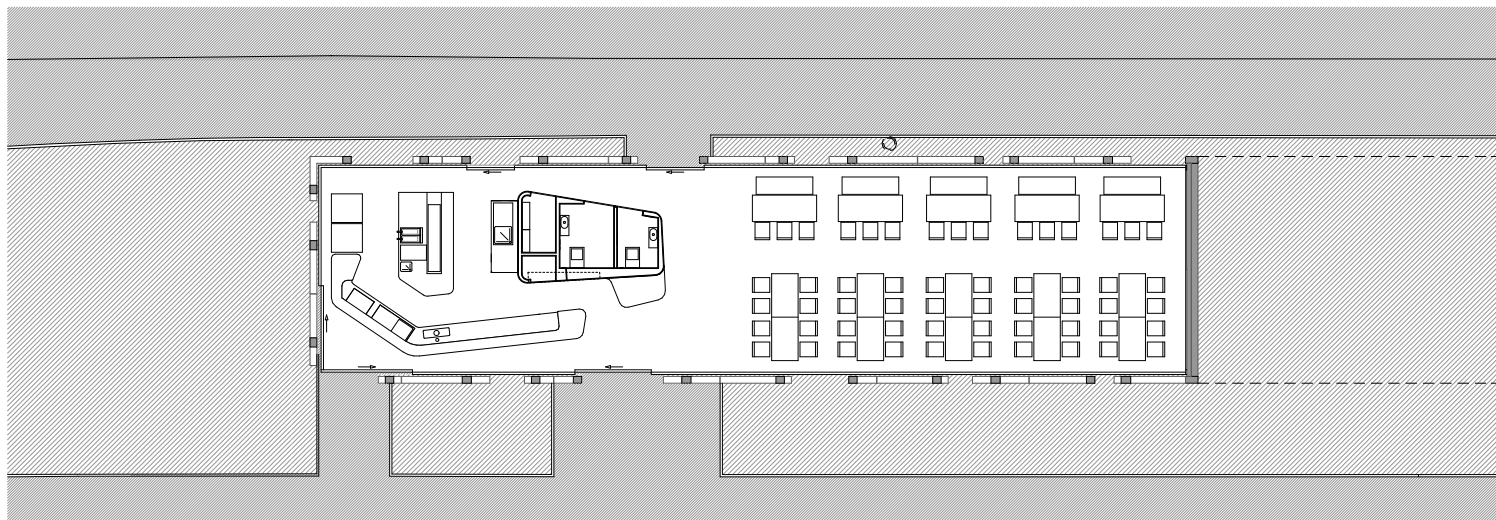


L'Omnia

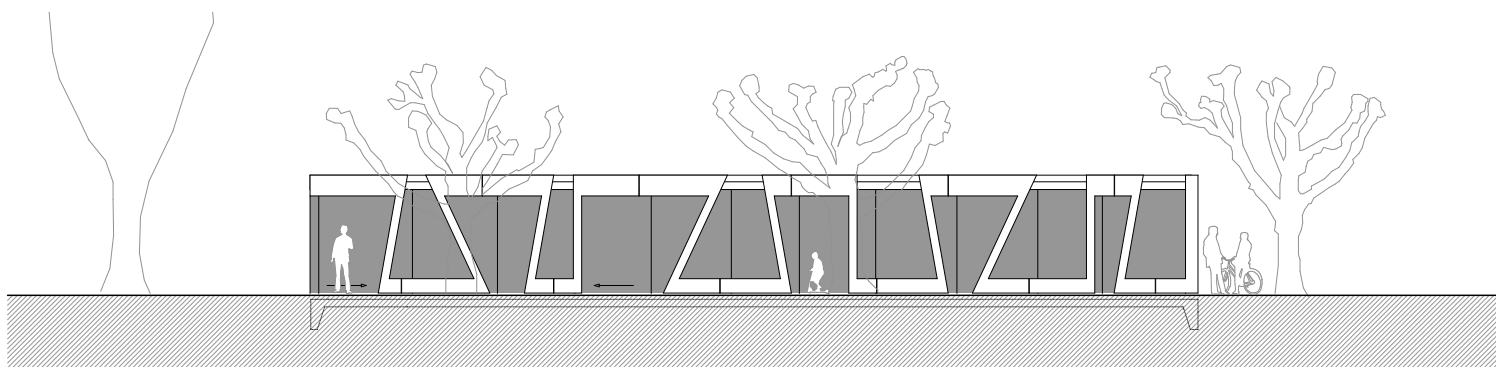
Un pavillon-restaurant au fil de l'eau

Villeneuve (VD), Switzerland
2008-2009
page 2 / 3

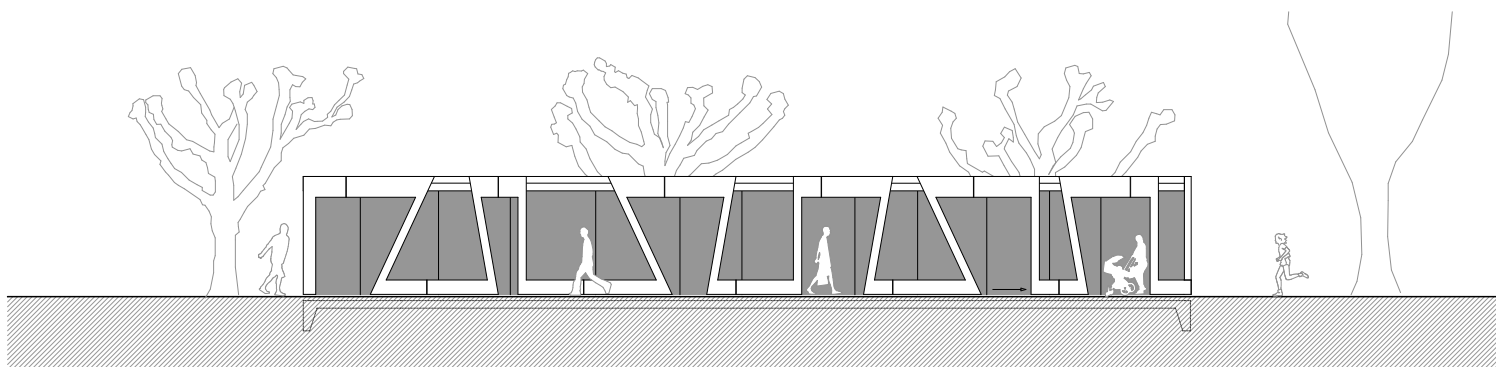
fastt
architectes associés



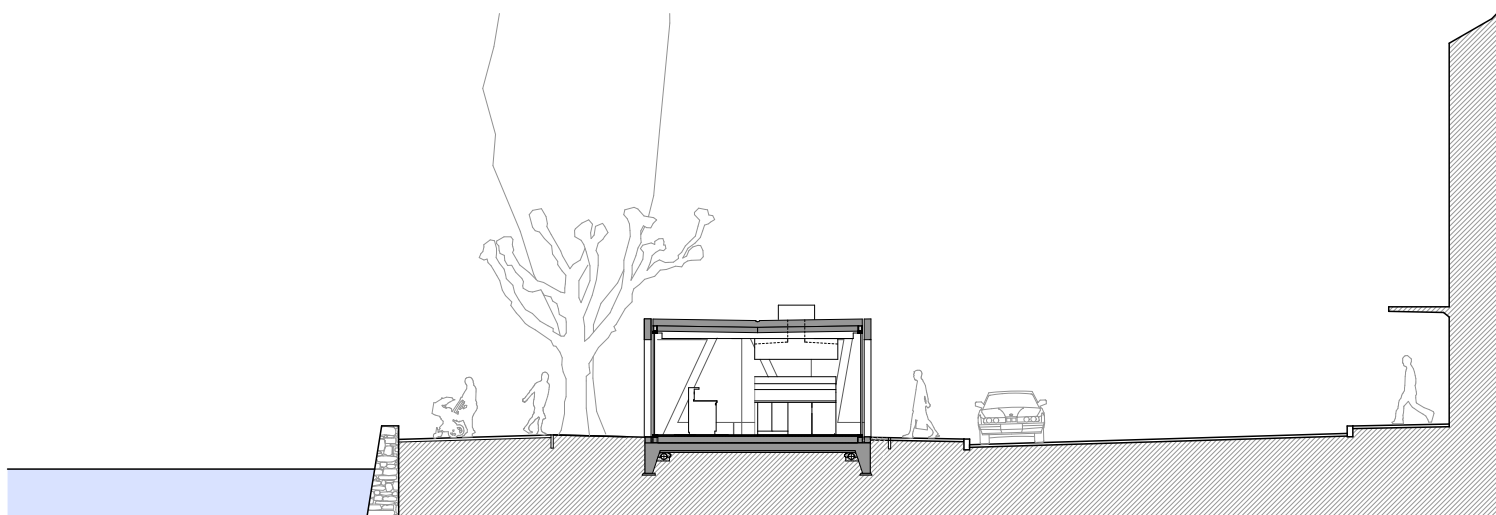
Plan du pavillon Ech: 1/200



Élévation côté Lac Ech: 1/200



Élévation côté rue Ech: 1/200



Coupe transversale Ech: 1/200